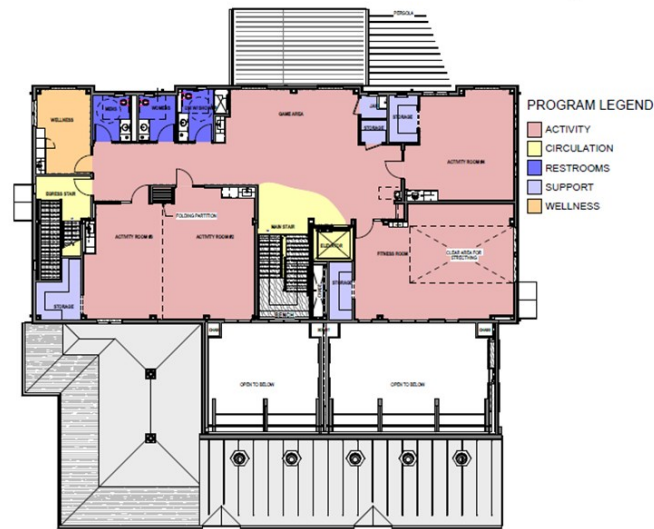
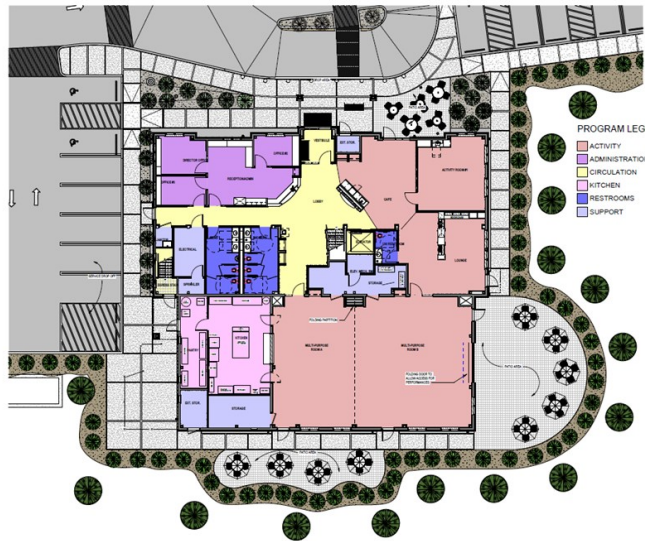


## SUPPORTING DONATIONS

<b>Large Vertical Windows (28 available)</b> .....	<b>\$900 ea</b>
Let the light shine in! First and second floors are full of windows.	
<b>Televisions (7 available)</b> .....	<b>\$900 ea</b>
<b>Rocking Chairs (2 available)</b> .....	<b>\$500 ea</b>
<b>Polywood Planters (several available)</b> .....	<b>\$500 ea</b>
<b>Library Bookcases</b> .....	<b>\$500 ea</b>
<b>Water Fountains (2 available)</b> .....	<b>\$500 ea</b>
<b>Defibrillators (2 available)</b> .....	<b>\$500 ea</b>
<b>Cornholes Games (2 game sets)</b> .....	<b>\$500 ea</b>
<b>Art Gallery Hanging Systems (several available)</b> .....	<b>\$500 ea</b>
<b>Bike Rack</b> .....	<b>\$500 ea</b>
<b>Sheet Pan Racks (2 available)</b> .....	<b>\$500 ea</b>

## BRICK MEMORIALS

<b>Patio Pavers 8" x 8"</b> .....	<b>\$400</b>
<b>Patio Pavers 4" x 8"</b> .....	<b>\$200</b>



### We appreciate your support—Thank you for your consideration.

\*All donations of \$500 or more may be recognized on an engraved plaque displayed in a prominent area in the Senior Center. Limited quantities on many items, and are available on a first come, first serve basis. New items may be added at a later date. See Gift Acceptance Policies for more information. Some items must be ordered by a certain date to meet manufacturing, delivery, installation schedules. Rates are subject to change without notice.

\*\*Shared Sponsorships: All gift giving opportunities may be shared with multiple people, families, or businesses—thus reducing the contribution from each. Donations may be prorated equally by participants or allocated as requested. For example: If 10 participants shared the Multi-Purpose Room, a prorated donation would be \$75,000 divided by 10, or \$7,500 each.

\*\*Friends of the Ayer Senior Center is a 501(c)(3) nonprofit charitable corporation. All donations are tax deductible to the extent allowed by law.



# Ayer Senior Center DONATION OPPORTUNITIES

Updated April 10, 2026



All rooms and most items shown here will have a personalized plaque with donor's inscription and name. Patio bricks will be inscribed with the donor's name and an optional message.

### LEVELS OF GIVING

<b>Gold Donor</b>	\$20,000 and up
<b>Silver Donor</b>	\$10,000 to \$19,999
<b>Bronze Donor</b>	\$1,000 to \$9,999
<b>Supporting Donor</b>	\$500 to \$999

### GOLD DONATIONS

<b>Multi-Purpose Room</b> .....	<b>\$75,000</b>
The main meeting area of the Senior Center is 2,426 sqft and will host large events such as holiday meals (seats up to 150), musical performances, movies, etc. A moveable partition wall provides flexibility to divide the room for daily lunch and fitness programming.	
<b>Pickleball Court (2 available; 2 required to build)</b> .....	<b>\$50,000</b>
Pickleball is the latest craze. Like tennis but with a slower ball and a smaller court. Knee-friendly!	
<b>Commercial Kitchen &amp; Pantry</b> .....	<b>\$50,000</b>
The fully equipped commercial kitchen includes essentials such as ovens, ranges, microwave, ventilation system, prep counters, refrigeration, storage space, cooking equipment, and sinks/washing equipment. Our staff will provide luncheons each week.	
<b>Café</b> .....	<b>\$40,000</b>
This area offers a perfect gathering place to meet up and hang out, while enjoying light refreshments (i.e. coffee and pastries) and friendship.	
<b>Fitness Room (775 sq ft)</b> .....	<b>\$35,000</b>
One of the most anticipated features of the new building, this exercise room will include treadmills, recumbent bicycles, Nustep and elliptical machines for cardiovascular exercise, as well as "universal machines" and free weights for strength training.	
<b>Landscaping (Front &amp; Back Landscaping Available)</b> .....	<b>\$30,000</b>
An abundance of native trees, flowers, and shrubs to cover the Senior Center grounds.	
<b>Elevator</b> .....	<b>\$25,000</b>
<b>Main Stairway</b> .....	<b>\$20,000</b>
<b>Game Room</b> .....	<b>\$20,000</b>

This popular upstairs gathering space provides a pleasant area in which to enjoy playing billiards, card games, and board games

<b>Wellness Room</b> .....	<b>\$20,000</b>
This quiet upstairs area offers private space for health screenings, blood pressure readings, massage therapy, and spa services. It also hosts smaller private meetings such as SHINE, attorney consultations, AARP Tax preparation, and telehealth appointments.	
<b>Activity Room #1 (449 sq ft)</b> .....	<b>\$20,000</b>
This downstairs area near the café provides room for activities such as bingo, seminars, Veterans meetings, Town committee meetings, Friends meeting, small group exercises, etc.	
<b>Activity Room #2 &amp; 3 (993 sq ft)</b> .....	<b>\$20,000</b>
This upstairs activity space is similar to the other activity rooms, but contains a wall partition that can be opened for larger groups such as yoga, or closed to become two more intimate meeting spaces for book clubs, current events, etc.	
<b>Activity Space #4 (492 sq ft)</b> .....	<b>\$20,000</b>
This upstairs area provides a dedicated space for arts & crafts/maker space programming. The flexible setup allows for other uses as desired.	

### SILVER DONATIONS

<b>Patio Furniture (Back Patio)</b> .....	<b>\$15,000</b>
This area will include multiple sets of 4' square tables, chairs, and sun umbrellas. Made of polywood, this Trex-like material is a resin made from recycled plastic and is built to last. It can withstand the elements due to its high resistance against mold and fading, while also maintaining a beautiful appearance over time.	
<b>Hearing Loop</b> .....	<b>\$15,000</b>
This special sound system for the multi-purpose room will enable hearing impaired individuals to connect their hearing aids via Bluetooth for enhanced hearing capabilities.	
<b>Information Hub</b> .....	<b>\$15,000</b>
Located next to the café, this is the gateway for Senior Center information. Your first stop to check in, and see what's happening. The area includes a large monitor that will list daily activities, as well as pamphlets and other information.	
<b>Director's Office</b> .....	<b>\$10,000</b>
This office houses the administrative heart of the Senior Center. Programs, policies, and services to support our seniors originate from here.	
<b>Outreach Coordinator's Office</b> .....	<b>\$10,000</b>
This important office is where older adults and/or their families meet to learn about available programs and services such as health insurance options, fuel assistance, food stamps, home care, and more.	
<b>Office of Veteran's Services and Town Social Worker</b> .....	<b>\$10,000</b>
<b>Flagpole</b> .....	<b>\$10,000</b>
This flagpole is in the front of the building, to fly the American Flag.	
<b>Walk-In Refrigerator/Freezer</b>	<b>\$10,000</b>
<b>Vestibule</b> .....	<b>\$10,000</b>
<b>Reading Room/Lounge</b> .....	<b>\$10,000</b>
A comfortable and peaceful area with a two-sided fireplace, club chairs for reading, quiet conversation with friends, or meditation.	
<b>20 QT Planetary Mixer—Bench Model</b> .....	<b>\$10,000</b>

### BRONZE DONATIONS

<b>Tabletop Steam Jacketed Kettle, 20 QT</b> .....	<b>\$9,000</b>
<b>Office Cubicles</b> .....	<b>\$8,000</b>
This busy cubicle area houses the new Program Coordinator's workspace, who plans and publicizes all the programs offered at the senior center and assures that everything runs smoothly and on schedule. There are also cubicles for the Van Coordinators when they are not driving, and the Dining Services Coordinator when they not in the kitchen.	
<b>Reading Room Fireplace</b> .....	<b>PLEGGED \$8,000</b>
A double-sided fireplace in the quiet cozy reading room offers a relaxing atmosphere.	
<b>Tables and Chairs for the Multi-Purpose Room</b> .....	<b>\$8,000</b>
Tables and chairs for 150 people for the multi-purpose room for larger special occasions. A mix of chairs with and without arms to accommodate all.	
<b>Ice Machine</b> .....	<b>\$6,500</b>
<b>Companion Restrooms (2 available) ADA Compliant</b> .....	<b>\$5,000 ea</b>
<b>Multi-Purpose Primary Storage Room</b> .....	<b>\$5,000</b>
<b>Mechanical Room</b> .....	<b>\$5,000</b>
<b>Game Room Bench</b> .....	<b>\$3,500</b>
<b>Activity Room Storage Closets (4 available)</b> .....	<b>\$3,000</b>
<b>Resting Bench</b> .....	<b>PLEGGED \$3,500</b>
Located on the landing area between the first and second floors, halfway up the grand staircase, where people can rest if necessary.	
<b>Large Video Projection Screen</b> .....	<b>\$3,000</b>
This 100+ inch screen will be located in the multi-purpose room for showing movies, presentations, and more.	
<b>Billiards Tables (2 available)</b> .....	<b>\$3,000 ea</b>
<b>Security System</b> .....	<b>\$3,000</b>
Includes interior and exterior cameras that are linked to the police station for monitoring, plus door and window alarms.	
<b>Outside Benches (6 available)</b> .....	<b>\$2,500</b>
<b>Video Bulletin Monitor</b> .....	<b>\$2,000</b>
This informational screen for daily events will be highly visible in the reception area near the café.	
<b>Elevated Planters (several available)</b> .....	<b>\$1,500 ea</b>
Located on the rear patio, these planters will mark the edge of the patio area	
<b>Electric Fruit &amp; Vegetable Slicer</b> .....	<b>\$1,500</b>
<b>Dining Table—Place Setting for 8</b> .....	<b>\$1,000</b>